

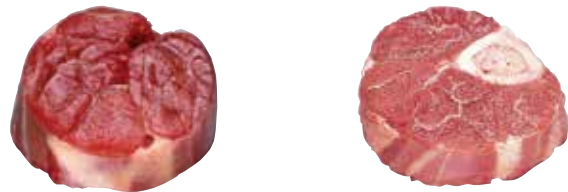
# AUSTRALIAN BEEF CUTS



1

## Beef Shin CODE Fore 1682/Hind 1683

Boneless shin/  
gravy beef      Shin bone-in/  
osso bucco



8

## Beef Flank CODE 2210

Flank steak



2

## Beef Silverside CODE 2030

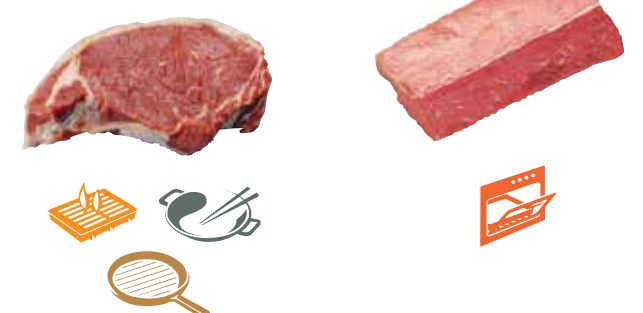
Corned silverside      Silverside minute  
steak/Girello      Eye round/Girello



9

## Beef Striploin CODE 2140

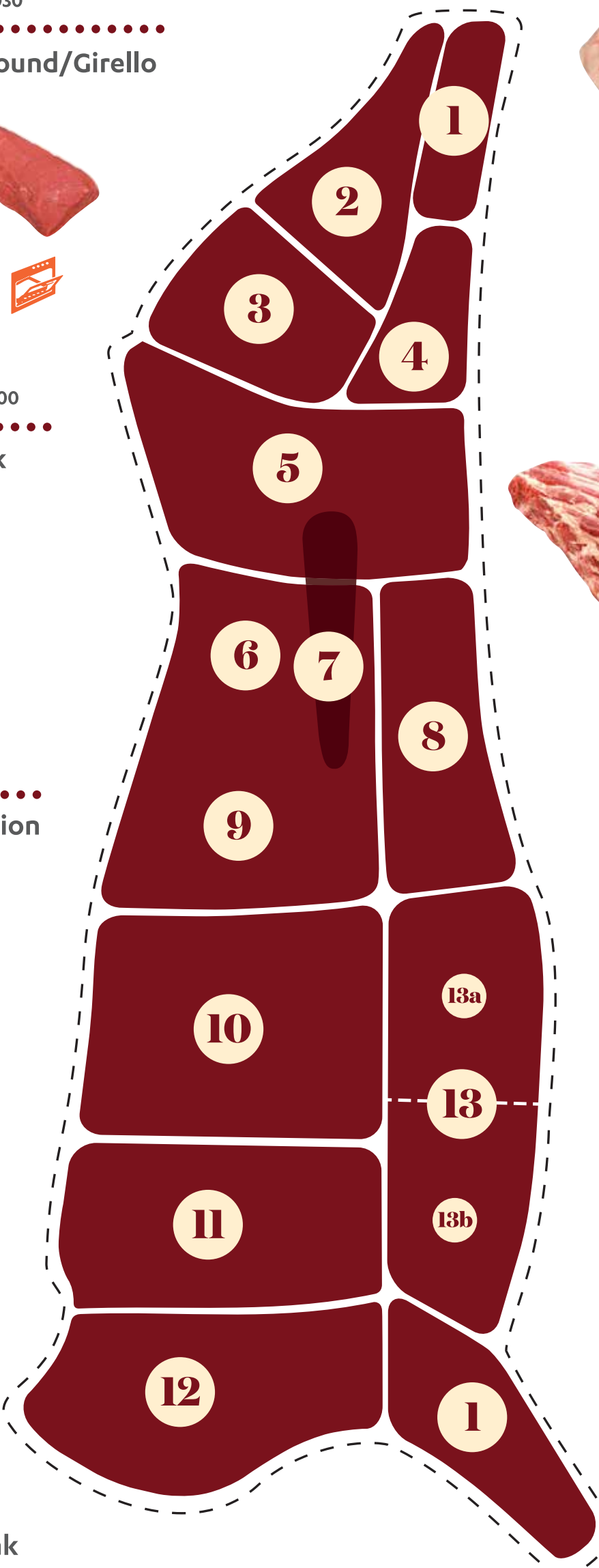
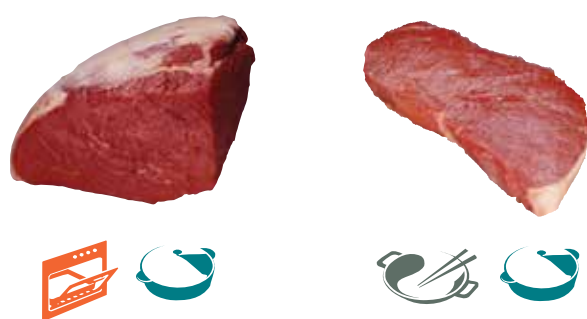
Sirloin steak/  
porterhouse/  
New York      Sirloin roast



3

## Beef Topside CODE 2000

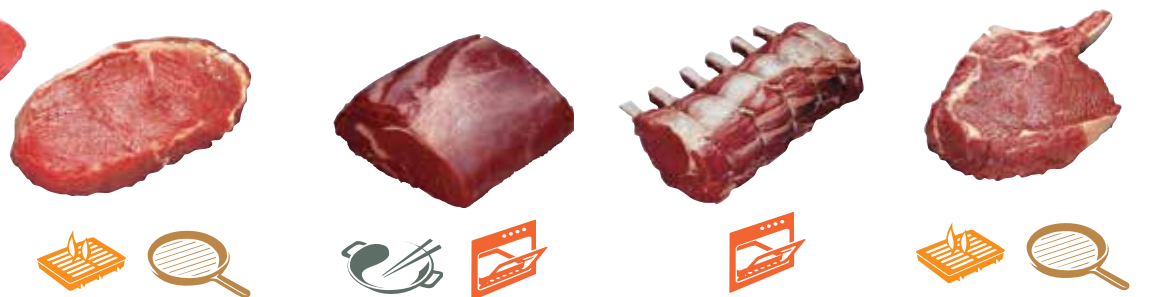
Topside roast      Topside steak



10

## Beef Cube Roll CODE 2240

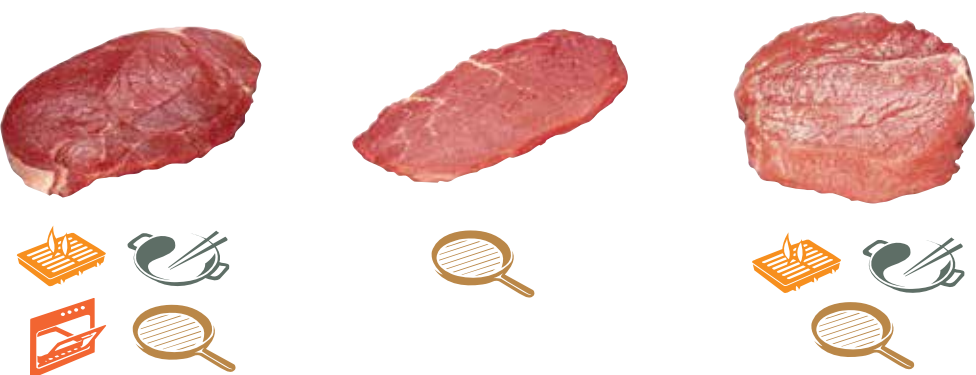
Rib eye/scotch  
fillet steak      Rib eye/scotch  
fillet roast      Standing rib  
roast      Rib cutlet



4

## Beef Knuckle CODE 2070

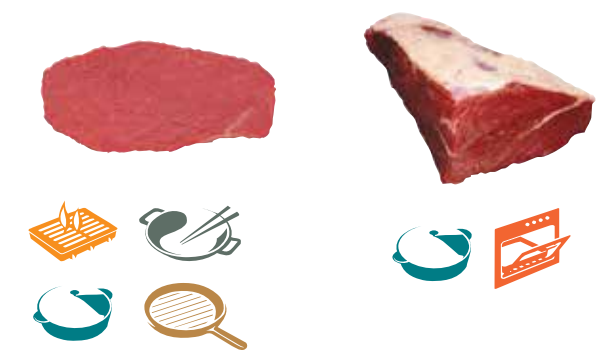
Round steak      Round/minute steak      Knuckle medallion



11

## Beef Blade CODE 2300

Blade steak      Blade roast



5

## Beef Rump CODE 2100

Rump steak      Rump roast      Rostbif



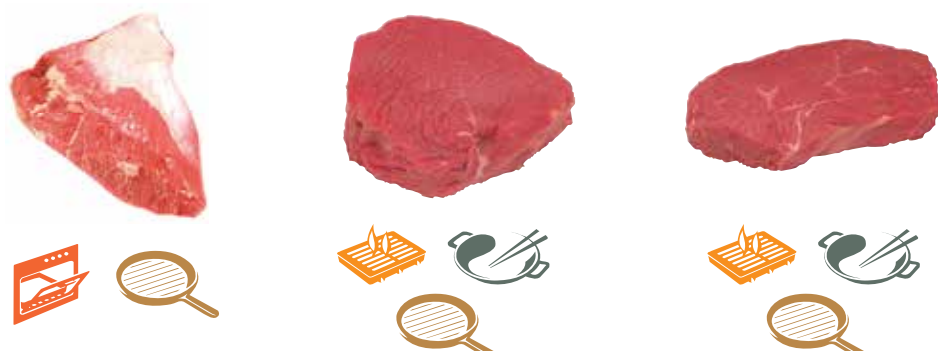
Oyster blade  
steak

Blade minute  
steak

Bone in blade steak/  
"Y bone" steak



Rump cap      Rump medallion      Rump centre steak



12

## Beef Chuck CODE 2270

Chuck steak      Diced chuck



# BEEF

## LEGEND



Stir-fry



Barbecue



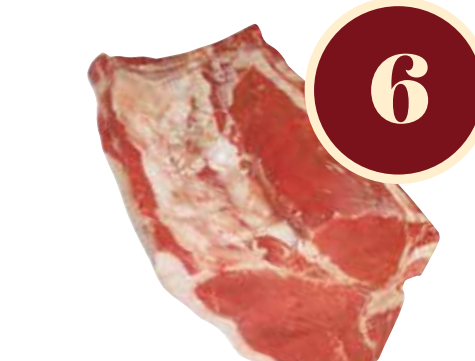
Pan-fry



Oven  
Roast



Hotpot/  
Casserole



6

## Beef Shortloin CODE 1552

T-bone



7

## Beef Tenderloin CODE 2150

Fillet/tenderloin  
steak      Eye fillet  
centre cut      Butt fillet



13

## Beef Brisket CODE 2320

Navel end Brisket (a)      Point end Brisket (b)



TRUE  
AUSSIE  
BEEF

www.trueaussiebeefandlamb.sg